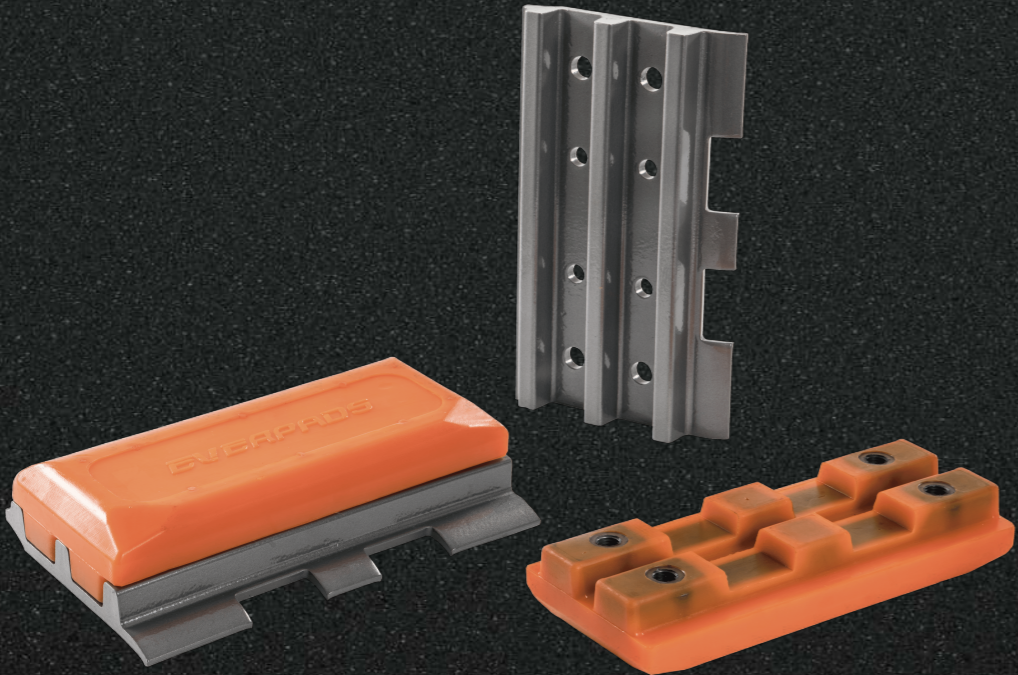


# EVER PADS

EV Polyurethane Track Pads



OUR PROMISE  
Quality • Service • Integrity

## TABLE OF CONTENT

Introduction	01-04
Polyurethane (Poly) Track Pads Brief intro	
- Why EVERPADS poly track pads	
- Benefits	05-12
Features	13-14
Machine Table	15



# ABOUT EVERPADS

Sixty years of rubber expertise and 30 years of road machinery make us a global leader in spare parts manufacturing.



For the past 30 years, EVERPADS has been active in more than 10 million successful construction projects with 48,000 customers worldwide, making our company and products world-renowned because of our focus and expertise in heavy machinery spare parts.



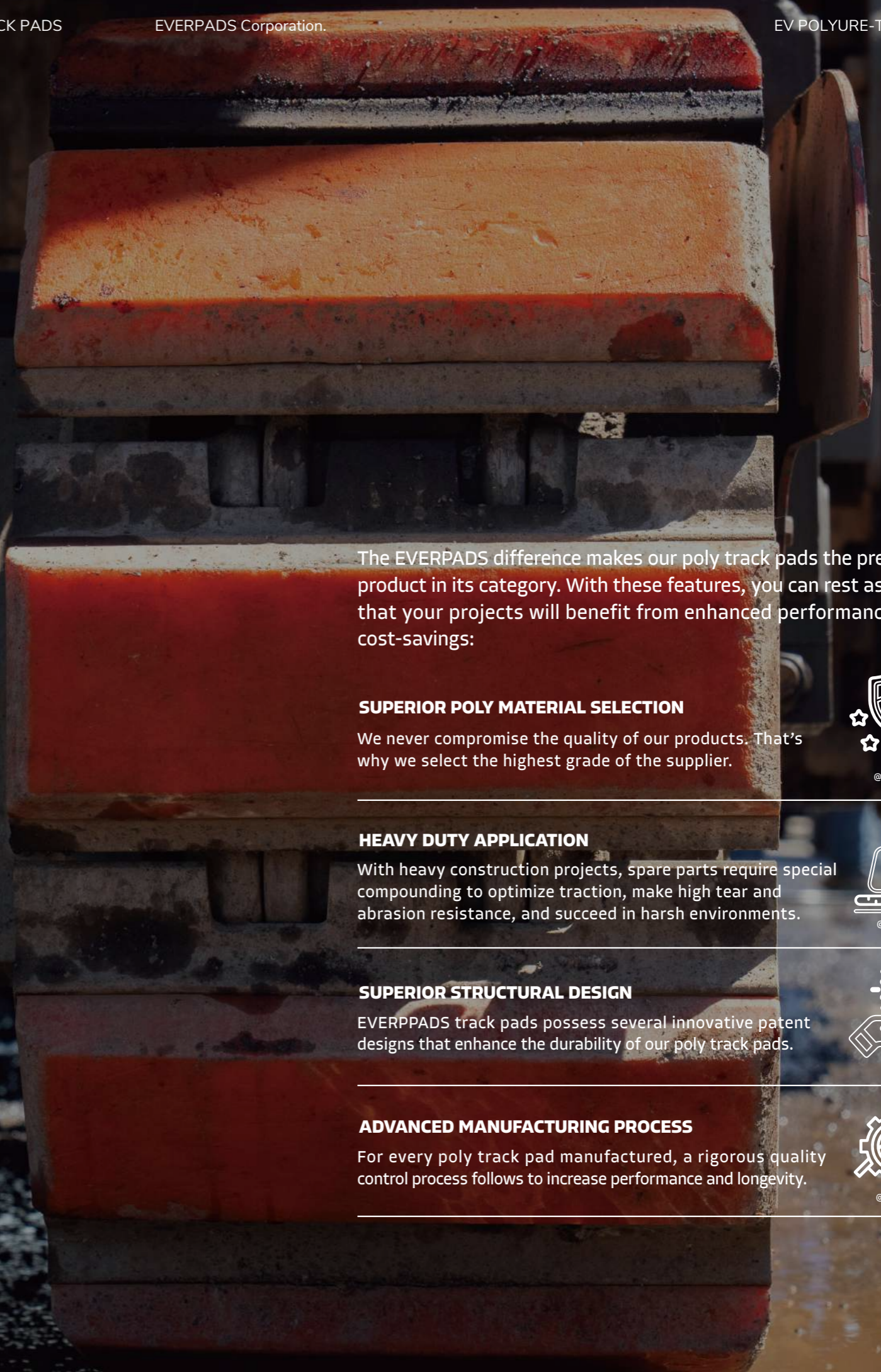
We know how difficult it is to successfully complete a construction project when spare parts contribute to high maintenance costs and machine downtime. These are the primary reasons why EVERPADS has dedicated our efforts to developing and manufacturing high-performance spare parts to reduce these concerns, including spare parts for cold milling machines or cold planers.



# EV POLYURE-THANE TRACK PADS

## Move forward with confidence.

The EVERPADS polyurethane (poly) track pads, invented by our founder Leo Chiang and supported by more than 60 professional staff with rubber expertise, contain the highest grade of polyurethane. This combination of deep knowledge and quality materials has given our customers the confidence to move forward with projects, regardless of the machine brand.



The EVERPADS difference makes our poly track pads the premiere product in its category. With these features, you can rest assured that your projects will benefit from enhanced performance and cost-savings:

### SUPERIOR POLY MATERIAL SELECTION

We never compromise the quality of our products. That's why we select the highest grade of the supplier.



@Flaticon

### HEAVY DUTY APPLICATION

With heavy construction projects, spare parts require special compounding to optimize traction, make high tear and abrasion resistance, and succeed in harsh environments.



@Flaticon

### SUPERIOR STRUCTURAL DESIGN

EVERPPADS track pads possess several innovative patent designs that enhance the durability of our poly track pads.



@Flaticon

### ADVANCED MANUFACTURING PROCESS

For every poly track pad manufactured, a rigorous quality control process follows to increase performance and longevity.



@Flaticon



## EVERPADS EV Polyurethane Track Pads

With more than 10 million projects conducted worldwide, EVERPADS on-site evaluations went back into our research, making us a leader in premium spare parts. Here are the key challenges specific to poly track pads and how we solved them:

### Challenge #1: Abrasion & Cut Resistance

Asphalt cold planers mostly work on curbs or milled road surfaces, eventually eroding the poly track pads' surface. Therefore, the poly track pad requires a high wear and tear resistance. If a poly compound isn't capable of resisting the curbs or other asphalt particles and moving under the high weight load, it will cause partial exfoliation resulting in premature failure.

- Wear and Tear
- Excessive Heat
- Weight Load

## SOLUTIONS : SPECIAL EV POLY COMPOUND

Our E30 poly formula is designed to preserve and extend the pads' physical strength throughout heavy machine operations and support maximum weight, resulting in a longer service life.

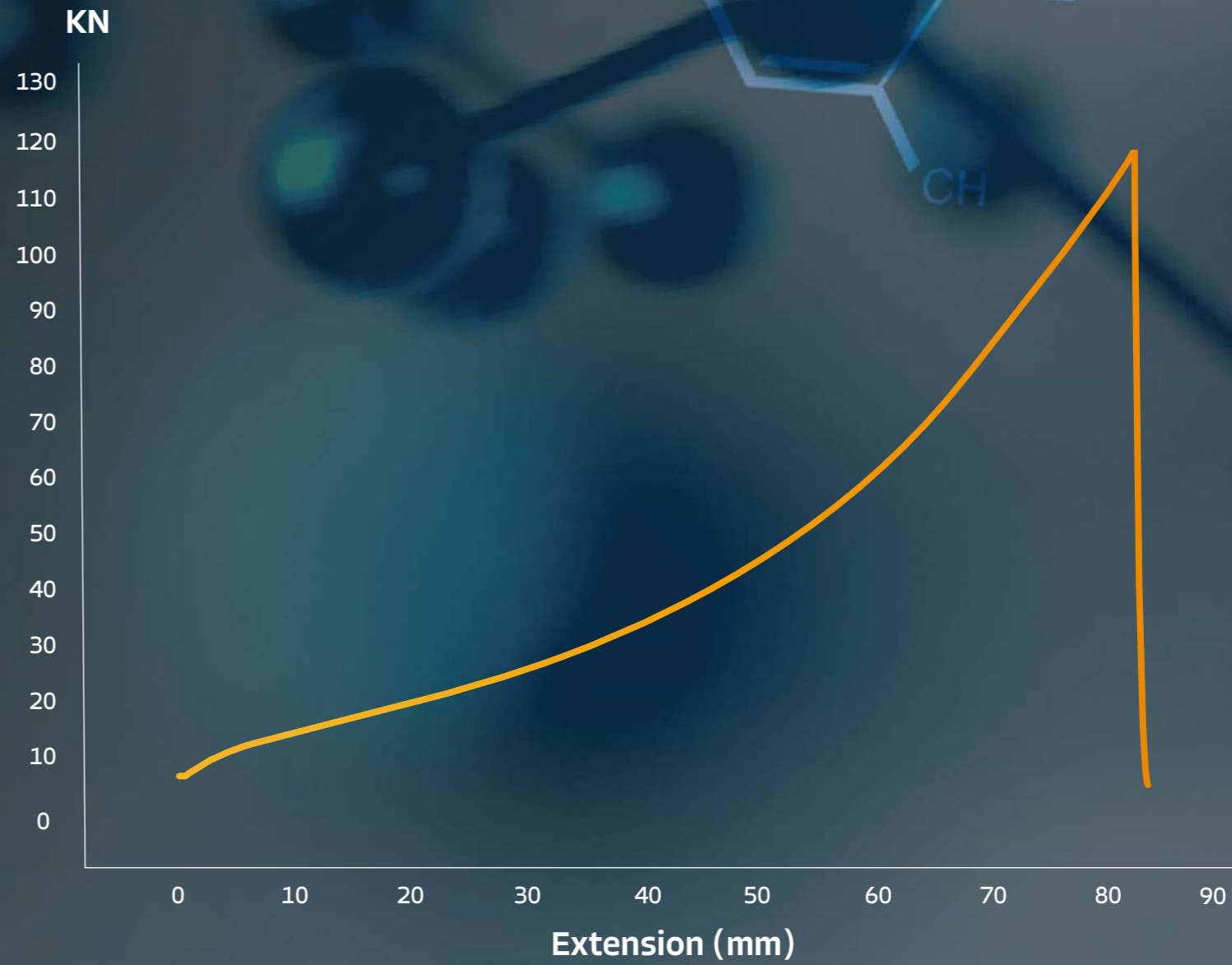
### Low Heat Retention Technology

The proprietary EVERPADS poly compound possesses low-heat generation, significantly preserving the physical strength of the poly track pads and ensuring that the poly track pad's hardness and wear resistance will not degrade over time. Track pads will require less frequent maintenance, reducing costs and downtime for your equipment. You'll also be able to operate your road milling machine with greater efficiency and reliability, knowing that your track pads will maintain their performance even under heavy loads and in challenging conditions.

- **Extends the pads' poly physical strength**
- **Increases wear resistance capability**
- **Handle heavy weight load of road milling machine**
- **Withstand a wide range of extreme environmental conditions**
- **Lifespan: up to 1600 hours**







## Increased Tear Resistance

EVERPADS was first to design and engineer poly track pads to create a high tear and abrasion-resistant formula. This special compound increases tear resistance capability by up to 130 kNm to minimize the chipping on the poly track pads when moving on milled side edges.





## Challenge #2: Weight Load Strength

Milling machines can weigh up to 49 tons, the poly track pads required to withstand the heavy load to prevent abnormal bending and curves occur. If poly track pads have bent, they will need early replacement.

## Solution#2

### Special manufacturing process

EVERPADS poly track pads are long-lasting and thicker than conventional polyurethane pad products because our ultra-high pressure mixing process enhances the poly pads' density and strength, making them highly durable and hard to chip off.





## Features

# EVERPADS POLYURE THANE TRACK PADS

## OTHER FEATURES THAT PROMOTE AGILITY AND DURABILITY:

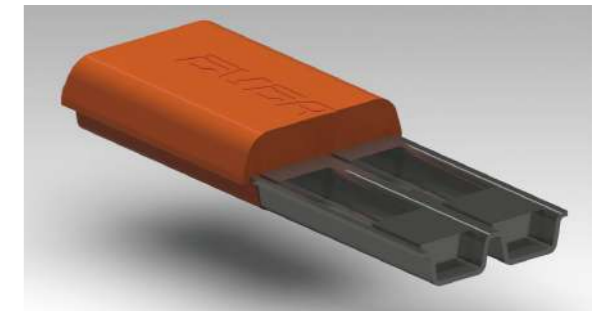
### PATENTED CHAMFER DESIGN: OPTIMIZES THE MOVING EXPERIENCE

EVERPADS' meticulously designed chamfer edge optimizes advanced quality and steering agility to overcome rugged road surfaces. This design helps cold milling machines avoid unnecessary wear and tear and enables them to handle intense construction projects.



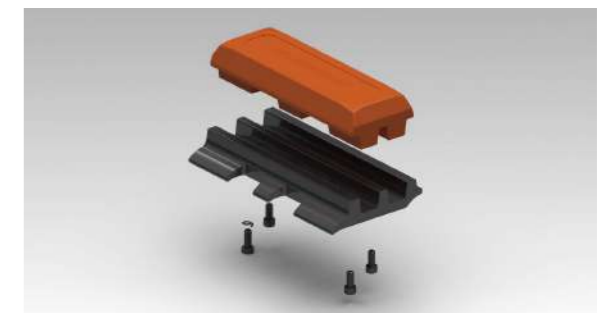
### PATENTED BUILT-IN PLATE STRUCTURAL DESIGN

EVERPADS proprietary support frame and built-in steel plate are designed to support cold milling machines with a weight capacity of up to 42 tons.



### BOLT-ON DESIGN

The bolt-on design features make installation and removal easier, making it cost-efficient for construction companies.



“ *EVERPADS EV Poly Track Pads are engineered inside and out to provide a smooth operator experience and maximize performance capabilities for the business.* ”



## Planer - Polyurethane Track Pads

Model			Maker
SP150	SP15	SF102C	
W1000F	W1500	PM200	
W100F	W100F(i)	PR450	
W100CF	W120CF	PM822	WIRTGEN
W130CF(i)	W150CF(i)	PM622	CAT
W200H(i)	W120F(i)	PL2100S	BITELLI
W200F(i)	W130	MP2100	DYNAPAC
W1000FT	W130F	RX500	MARINI
W1200F	W130F(i)	SM2000	ROADTEC
W1200FT	W150CF	SM2000C	SANY
W1200L	W150	W2200	GOMACO
W120F	W150(i)	W2100	BOMAG
W200i	2000DC	W220	
W1300	W200	W380CR	
W210XP	PM620	W240CR(i)	
W250(i)	W120CF(i)	W240CR	
W100CF(i)	W1300F	SP500	
BM1300/30	XM200KII	BB681C	
PL2000LS	W380CR(i)	W130CF	
W250(i)	W120CF(i)	W100CF(i)	
W195	W210	PL2000S	
W250	W100 Fi		



EV Polyurethane Track Pads

**HEADQUARTER**

**EVERPADS CO., LTD.**

Tel: + 886 4 2358 2531/2000  
 Fax: + 886 4 2358 9090

Add: No.83,32nd Road,Taichung Industrial Park,Taichung, 40768,Taiwan ROC

Email: service@everpads.com

**USA BRANCH**

**EVERPADS INC.**

Tel: + 1 215 420 7086 (toll free)  
 Fax: + 1 888 928 7237 (toll free)

Add: 320 Constance Dr,Suite 5 Warminster, PA 18974

Email: america@everpads.com

**EUROPE BRANCH**

**EVERPADS B.V.**

Tel: + 31 10 415 7820  
 Fax: + 31 10 415 6414

Add: Calandstraat 81, 3125BA,Schiedam, the Netherlands

Email: everpads.bv@everpads.com

[www.everpads.com](http://www.everpads.com)