

EVER PADS

Undercarriage System- Steel Parts

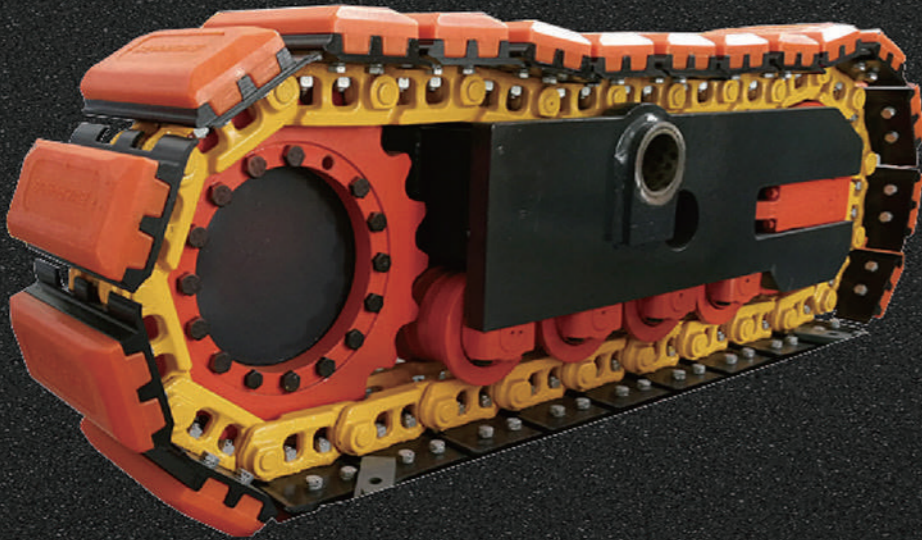


TABLE OF CONTENT

<u>EVERPADS Automation Manufacturer</u>	<u>01-02</u>
<u>X-type Track Chain</u>	<u>03-08</u>
<u>Gen-E Track Roller</u>	<u>09-12</u>
<u>Idler Roller</u>	<u>13-14</u>
<u>Sprocket</u>	<u>15-16</u>

OUR PROMISE
Quality • Service • Integrity

Sixty years of rubber expertise and 30 years of road machinery make us a global leader in spare parts manufacturing.

For the past three decades, EVERPADS has been active in more than 100,000 successful construction projects with our 48,000 customers worldwide, making our company and products world-renowned because of our focus and expertise on heavy machinery spare parts. We know how difficult it is to successfully complete a construction project when spare parts contribute to high maintenance costs and machine downtime. These are the primary reasons why EVERPADS has dedicated our efforts to developing and manufacturing high-performance spare parts.

“ The Most Sophisticated Undercarriage System Production Line for the Asphalt Milling Machine, Asphalt Paver & Excavator ”

EVERPADS Research & Development

EVERPADS spent over 30 years researching the market of undercarriage parts focusing on several critical challenges:

- Track chain with poor durability
- Track roller experiencing oil leaks
- Sprocket with short service life

We have redesigned our track system to solve these challenges.

Advanced Manufacture Processing

Besides meticulous design, we apply the most advanced heat treatment process to ensure every single part is wear resistant.

- ABP heat induction creates the deepest wear resistance level
- Automatic heat processing

High Standard Quality Inspection and Control

We strive to maintain a high standard of quality inspection and control to ensure that every crawler part sent to you meets the highest level of excellence. Our inspection process is designed to achieve a 99% standard:

- Laser flaw detection process
- Automatic screw-tightening process
- Hardness detection
- Weight load testing

Our commitment to this rigorous process ensures that we consistently deliver products of exceptional quality that exceed your expectations.



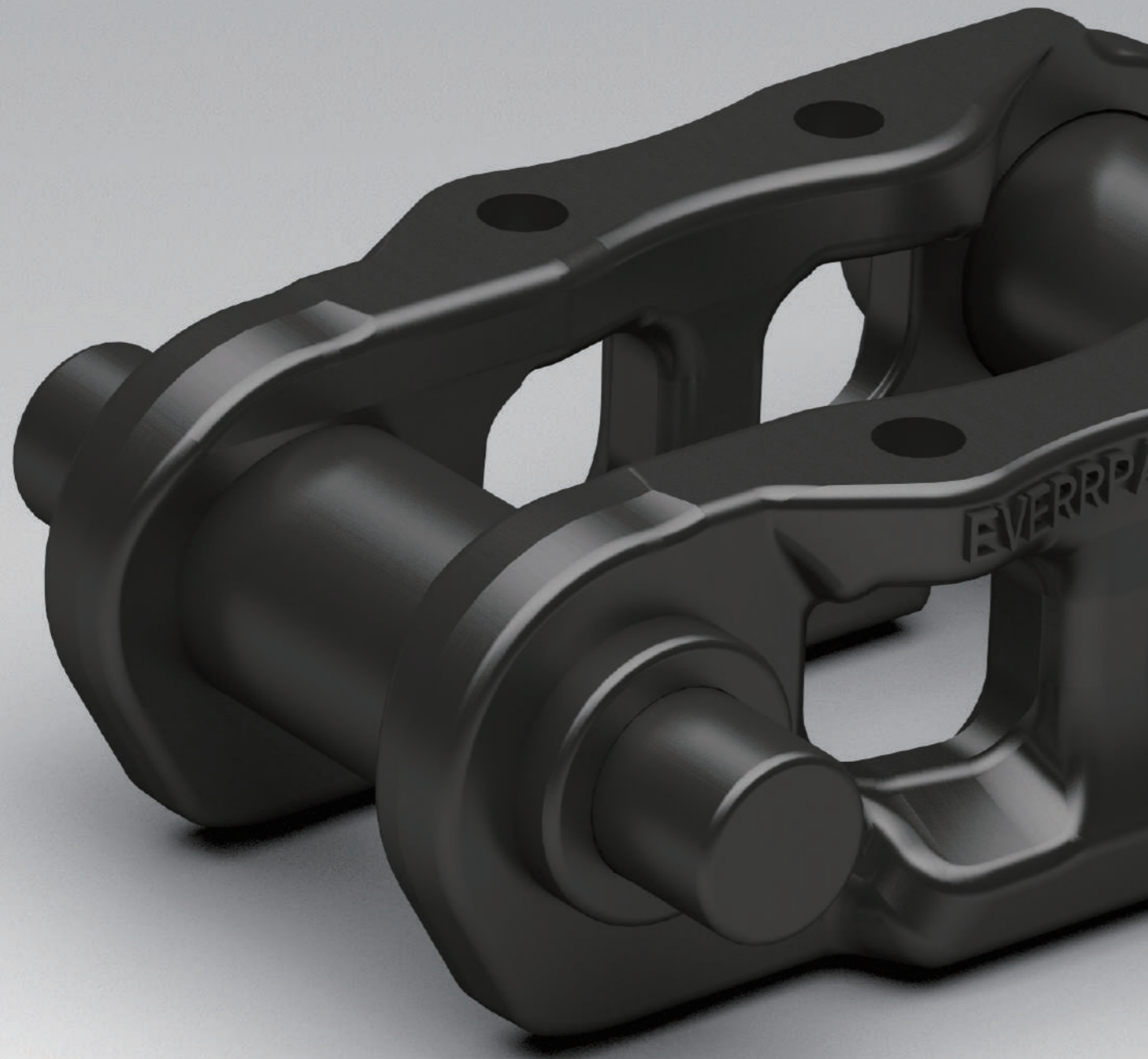
X-TYPE TRACK CHAIN

Undercarriage System

Our newest design X-type Track Chain optimizes strength to withstand up to 800 kN and can secure your heavy machine in every harsh work environment.

In any construction environment, the successful movement of heavy machinery depends on the chain track's reliable operation, which in turn drives other roller components. This necessity requires robust stress support to

prevent chain breakage and ensure safety. To address these concerns, EVERPADS has redesigned the X-series track chain to ensure 99% prevention of chain breakage and enhanced wear resistance. With these improvements, users can rest assured that premature chain damage and associated safety risks are eliminated.



GENERATION
X-TYPE DESIGN
Undercarriage System

GENERATION X-TYPE DESIGN

Undercarriage System



EVERPADS newly designed X-type track chain, forged with the strongest alloy steel materials, includes enhanced features such as an expanded geometric structure area and strengthened tensile load capacity. These features, as detailed below, reduce the easy-to-break structure position and increase the impact resistance and tensile strength. When the chain link shaft breaks, you only need to replace the shaft and not the entire track chain.

01

40% THICKER: ENHANCED BODY GEOMETRY

Significant wear resistance capability

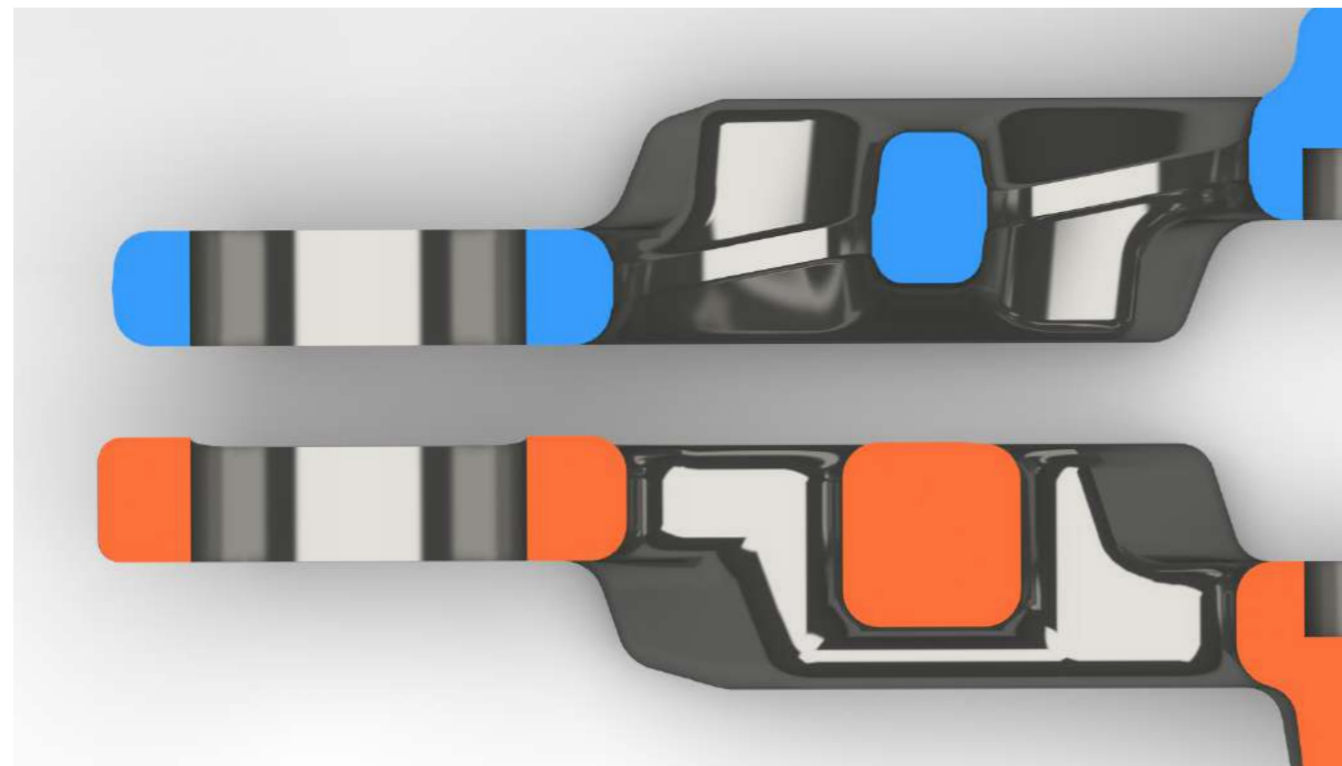
The X-Type track link features an additional engineering and design patent with the increased body geometry and contact surface thickness. The thickness prolongs the longevity of the track links when wear and tear occur.

The X-Type track chain features refined engineering and design, demonstrating impossible strength and an uncompromising commitment to enhancing performance in your construction projects. In addition, we apply an ABP advanced medium frequency heating treatment to enhance the hardness and wear-resistance deepness of the link body. We adopt professional heat treatment technology with a result of HB 364-444 in the hardness of the material, making it difficult for the chain to deform. This depth of heat treatment will continue to provide high wear resistance even after the first level of surface wears.



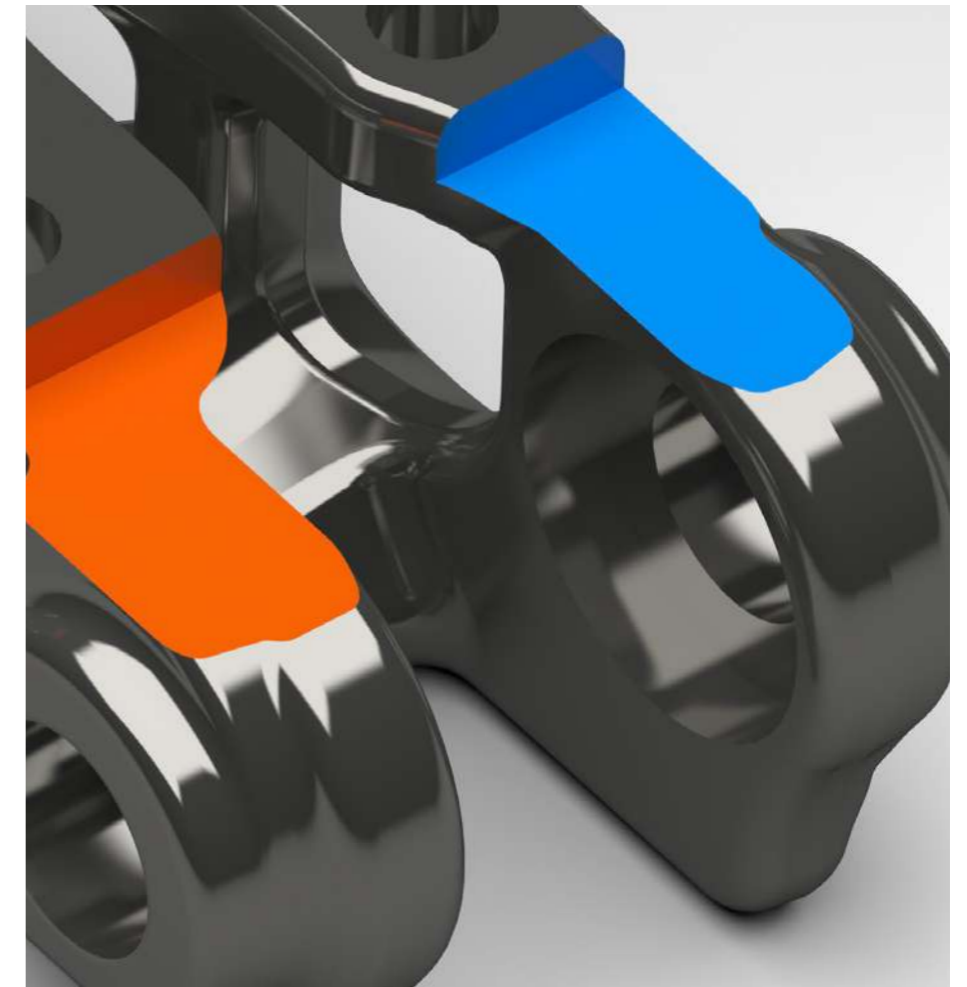
Higher weight load capability

The new design also increases the weight load capability and ensures that every construction operation avoids cracking and breaks.



GENERATION X-TYPE DESIGN

Undercarriage System



02

ELIMINATES THE WEAKEST LINK IN THE TRACK CHAIN

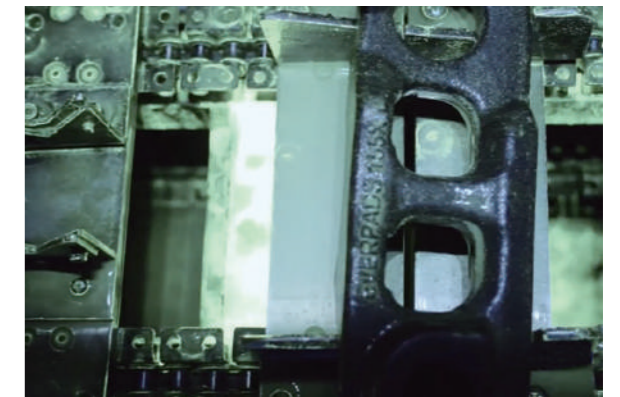
The weakest link of the track chain is the pin sleeve hole that often breaks when the chain can't withstand the stress of uneven forces. EVERPADS introduces the proprietary track links by reengineering the geometry of the pin sleeve hole. This reengineering increases the tensile strength by 38 percent and can withstand up to 800 kN with 200 mm displacement. This upgrade provides mechanical strength for every movement to help contractors and operators complete heavy construction workloads.

Quality Control

We utilize automated inspections for defects, inspecting every chain link before assembly.

Automatic Tightening Process

Because of our advanced automation centering process, all the dimensions are precisely matched to the mounting hole that ensures track chain accuracy and stability.



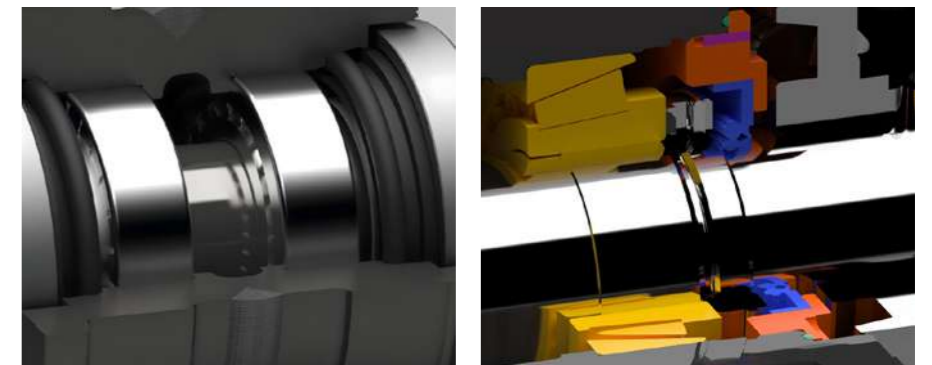


E-GENERATION TRACK ROLLER

Undercarriage System

E-GENERATION TRACK ROLLER

Undercarriage System



As an industry leader in innovation and performance, EVERPADS proudly presents the E-generation Track Roller, designed to address the persistent issue of oil leakage in heavy construction equipment. This groundbreaking solution offers enhanced performance and unparalleled reliability for your most demanding construction projects.

The EVERPADS E-generation Track Roller is engineered with advanced design and cutting-edge technology, featuring our new generation oil-sealed system and innovative bearing system. These key features work together to deliver improved performance, extended service life, and unparalleled dependability. Our state-of-the-art oil-sealed system effectively prevents oil leaks, ensuring your projects proceed smoothly and without unnecessary delays. The robust bearing system enhances durability and reduces maintenance requirements, contributing to increased overall efficiency.

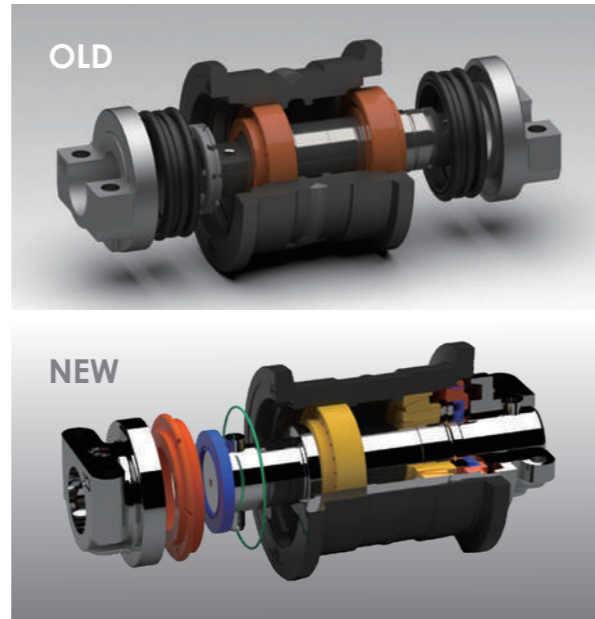
By choosing the EVERPADS E-generation Track Roller, you will benefit from reduced downtime due to maintenance and enhanced overall efficiency. This superior track roller has been meticulously engineered to provide a seamless and hassle-free experience, revolutionizing how you manage your heavy construction equipment.

Innovative Heavy-Duty Sealed System

To solve the challenge of unexpected oil leakage problems, we redesigned the structure of the track roller that can prevent 99% of oil leakage.

The Safeguard Mechanism Design

This innovative feature ensures uninterrupted functionality even in the event of unexpected failures, such as crushing hard objects or tilting to one side during construction. Thanks to the Gen-E sealed system, lubrication will still be contained within the roller, enabling continued movement capability. With this cutting-edge design, you can trust that your machinery will be protected from unexpected downtime and costly repairs.



Tapered Bearing System

Our state-of-the-art tapered bearing system ensures maximum durability and stability during operation, reducing friction and wear and tear on the machinery. This system is engineered to provide reliable performance and prevent equipment failures, even in the most punishing work environments.



E-GENERATION TRACK ROLLER

Undercarriage System



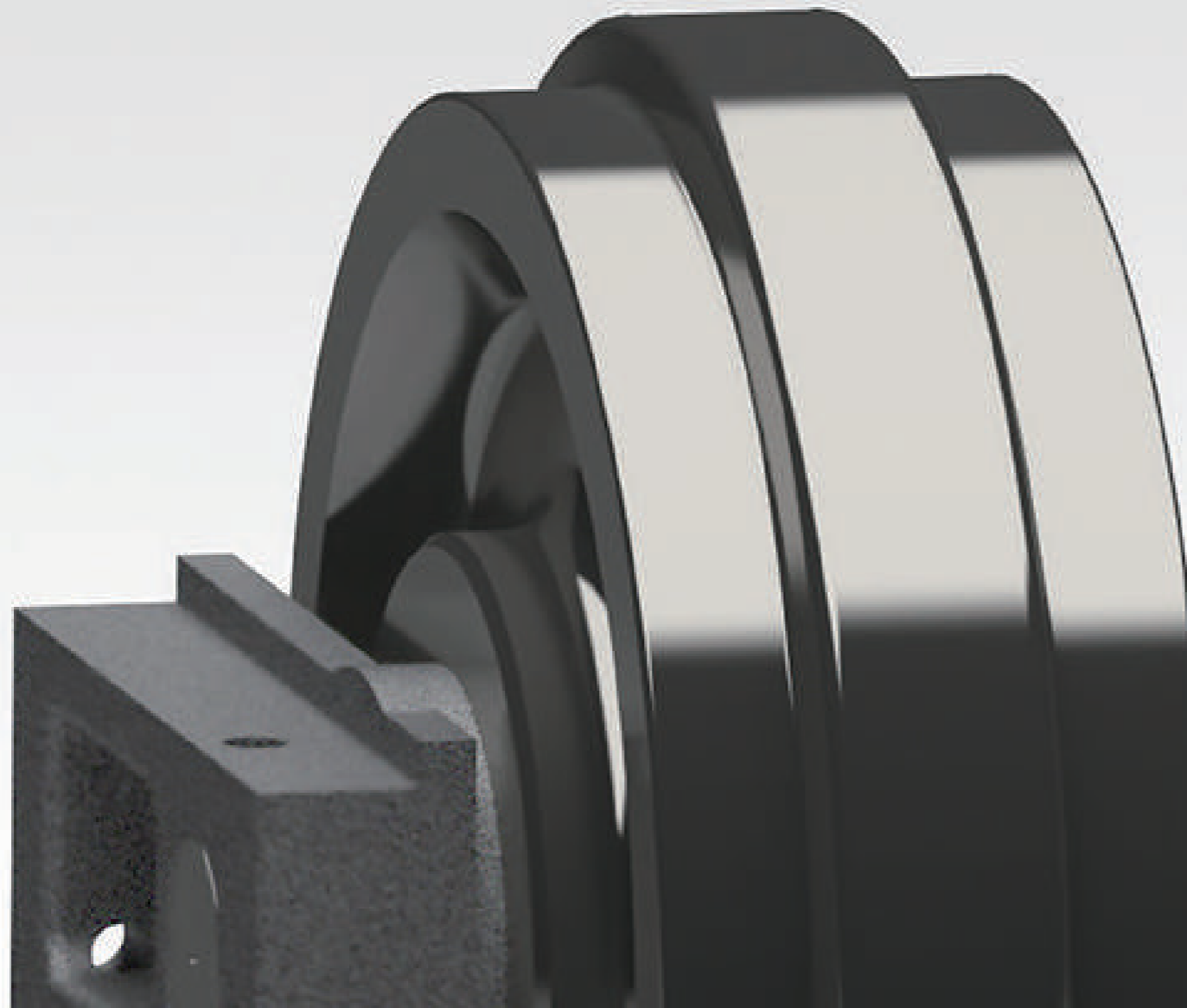
Superior Lubrication: Low Heat Coefficient

EVERPADS high-quality roller oil provides internal lubrication and maintains an optimal internal temperature, ensuring peak accuracy and consistency in your machinery's movement. With this state-of-the-art lubrication system, your equipment will perform at its best, even under the most extreme conditions. The robust roller is engineered for durability and can handle even the heaviest machines. Trust in our innovative lubrication system to keep your machinery running smoothly and efficiently for years to come.



Durable Material

The track roller axle features high-quality forge material with quenching treatment and finishings that are perfectly matched with your track chain.



E-GENERATION IDLER ROLLER

Undercarriage System

In demanding cold milling machine and excavator operations, the idler roller is crucial for stability to support weight and continuous movement, whether it's the front or rear of the undercarriage. Our research shows inferior materials and improper heat-treated surfaces cannot provide the sufficient strength needed for these parts.

The EVERPADS Idler Roller products are produced with high-quality casting steel, including a proper heat-treated surface, helping propel heavy equipment forward and backward. Our products increase the service life while

preventing damage to the undercarriage because of our attention to the technology and engineering, as highlighted:

- A state-of-the-art production process throughout, including in ternal lubrication.
- Added durability and cooling effectiveness using imported roller oil for lubrication.
- Optimized reliability with our forged structure.
- Extended lifespan using imported floating oil seals and sealing rings, minimizing heat generation to zero due to its imported bearing.

E-GENERATION IDLER ROLLER

Undercarriage System

Bearing System

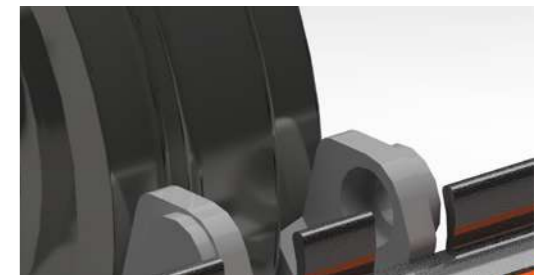
Imported floating oil seals and sealing rings aid the extended life span. Heat generation is minimized to zero due to its Imported bearing.



Long-lasting Service Life

Heat-treatment surface and forged structures

EVERPADS roller products are produced with high-quality casting steel, including a proper heat-treated surface.



Precise Track Guidance

EVERPADS Idler Rollers have a huge effect on the working operation of cold milling machines, pavers, and excavators. Whether it's the front or rear of the undercarriage, our Idler roller products can effectively propel the machine forward and backward.





E-TYPE SPROCKET

Undercarriage System

Cold, hot, and humid environments can affect performance if sprockets don't have sufficient strength for efficient transfer or torque between shafts. Lack of adequate strength can also result in bending and breaking. The EVERPADS sprocket product outlasts any conventional surface-hardened sprockets because it undergoes proper heat treatment, exceeding OEM standards.

E-TYPE SPROCKET

Undercarriage System

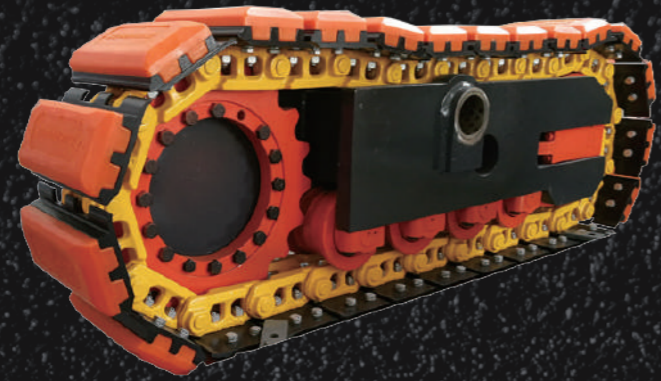
Long Service Life

Our sprocket products have a longer service life because of the effective heat treatment technology that enables it to provide wear resistance to the maximum extent while enduring huge load capacity.

Precisely Matched With Track Chain

EVERPADS-owned intelligent manufacturing delivers precise machinery processing that accurately matches with most track chains. The customizable options of EVERPAD' sprockets can match various chains and applications.





Undercarriage System-Steel Parts

CONTACT US

EVERPADS is an ISO-certified and OEM-trusted road construction equipment manufacturer focusing on cold milling machines, asphalt pavers, rollers, vibratory hammers, and excavators. We help our clients efficiently accomplish construction projects through our innovation and technology.

HEADQUARTER

EVERPADS CO., LTD.

Tel: +886 4 2358 2531/2000

Fax: +886 4 2358 9090

Add: No.83,32nd Road,Taichung Industrial Park,Taichung, 40768,Taiwan ROC

Email: service@everpads.com

USA BRANCH

EVERPADS INC.

Tel: + 1 215 420 7086 (toll free)

Fax: + 1 888 928 7237 (toll free)

Add: 320 Constance Dr,Suite 5 Warminster, PA 18974

Email: america@everpads.com

EUROPE BRANCH

EVERPADS B.V.

Tel: + 31 10 415 7820

Fax: + 31 10 415 6414

Add: Calandstraat 81, 3125BA, Schiedam,the Netherlands

Email: everpads.bv@everpads.com

www.everpads.com

Contact us for a FREE estimate on your next project.

